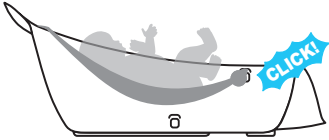
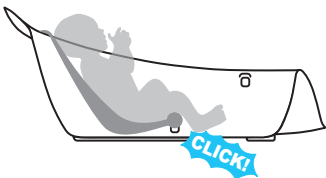


MOBY® SMART SLING™ 3-stage tub



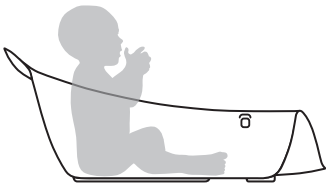
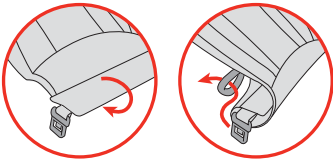
Stage 1: Newborns (0 – 3 months, up to 15 lb) Baby is supported head to toe.

- Attach top sling clips to lip of tub, in notches provided
- Attach bottom sling clips to upper slots as shown



Stage 2: Infants (3 – 6 months, up to 20lb) Infants learning to sit up are securely supported under their knees.

- Attach top sling clips to lip of tub, in spaces provided
- Roll bottom of sling one full revolution
- Thread bottom clips through loops on bottom of sling
- Attach bottom sling clips to lower slots as shown



Stage 3: Sitters (6+ months, up to 25lb) Remove the sling completely for babies who can sit up unassisted.

! WARNING

- **DROWNING HAZARD:** Babies have **DROWNED** while using infant bath tubs. **To prevent drowning:** • Stay in arm's reach of your baby. • Use in **empty** adult tub. • **ALWAYS** keep the drain **open** in the adult bathtub. • **NEVER** rely on a toddler or preschooler to help your baby or alert you to trouble. Babies have drowned even with other children in or near bath tub. • Babies can drown in as little as **1 inch (2,5 cm)** of water. Use as little water as possible to bathe your baby. • **NEVER** use in a sink.
- **FALL HAZARD:** Babies have suffered **head injuries** falling from infant bath tubs. **To prevent falls:** • Place tub **only** in adult tub for safe use. • **Never lift or carry** this product with baby in it. • This product does not offer any additional safety related to water hazard.

This product is not a toy. Never leave child unattended in the bath. Always use with adult supervision. Always use Smart Sling Tub inside a larger empty bathtub, or on a flat and stable surface. Remove & discard all packaging materials properly.

INSTRUCTIONS FOR USE: Please read these instructions before use of this product, and retain for future reference. Insert plug into the drain hole at the bottom of the tub. When bathing baby, fill the bathtub with as little water as possible. ALWAYS test water temperature before placing baby in this product. Typical temperature should be between 90°F (32°C) and 100°F (38°C). To avoid scalding by hot water, position the product in such a way to prevent the child from reaching the source of water. Do not use replacement parts or accessories other than those approved by the manufacturer. Before each use, inspect the product. Stop using the product at the first sign of damage or weakness. Discontinue the use of the product if it becomes damaged, broken, or disassembled.

CLEANING AND CARE: Rinse Tub and Smart Sling after each use. Machine wash the sling with cold water, gentle cycle. No bleach. Hang dry. Do not iron. Do Not Dry Clean.

STORAGE: Hook turns to attach to showerhead, curtain bar or towel bar.